

# Die Sage vom Erzberg

Posaune 4

Introduktion

Johann Hausl



9



13



17



21



25



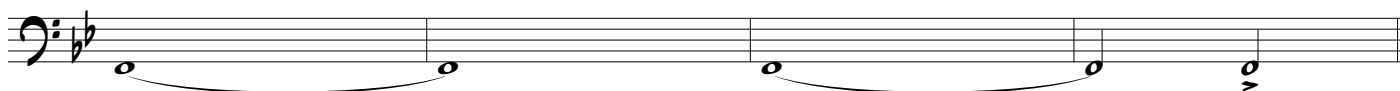
29



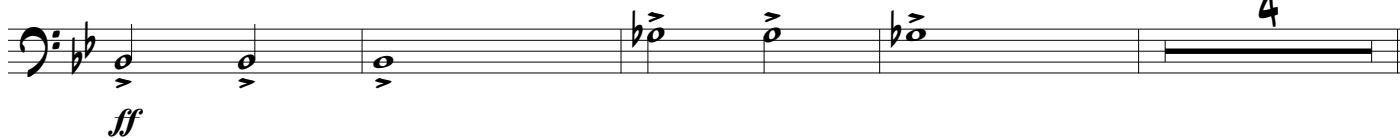
33



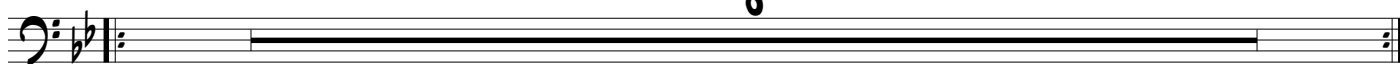
37



41



49



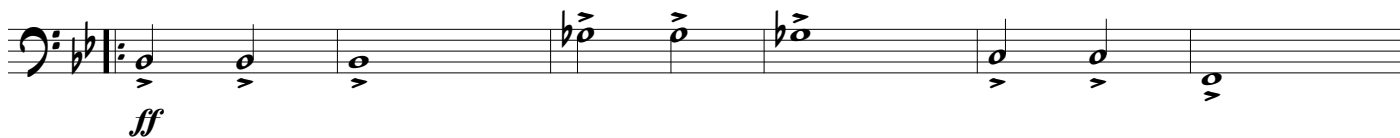
57



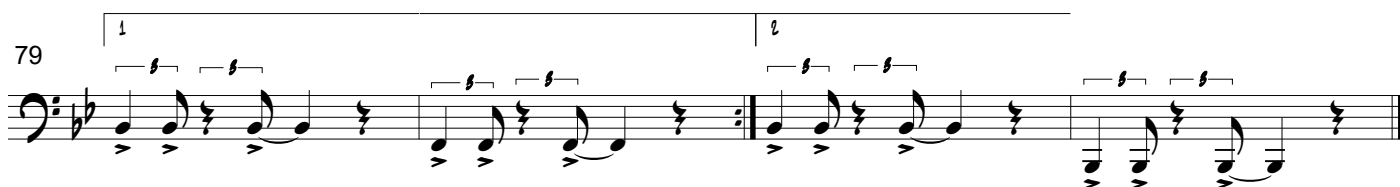
65



73



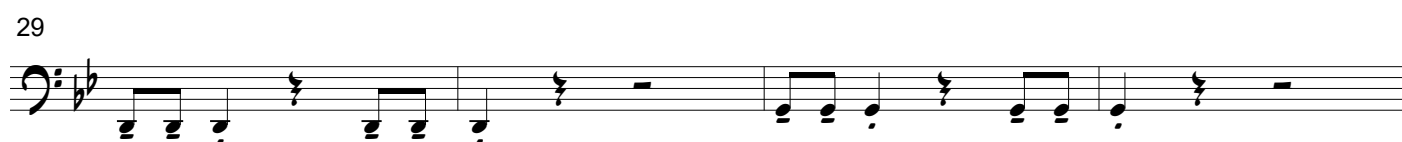
79



# Der Wassermann

Posaune 4

Johann Hausl



The bass line is written on a single staff in bass clef with a key signature of one flat (B-flat). It begins with a whole rest, followed by a quarter rest, then a half note G2 (labeled *mf*), a quarter note F2, and a half note E2. This is followed by a whole rest, then a quarter rest, then a half note D2, a quarter note C2, and a half note B1. This is followed by a whole rest, then a quarter rest, then a half note A1, a quarter note G1, and a half note F1. The line ends with a whole rest.

[illegible]

The first staff of music is written in bass clef with a key signature of one flat (B-flat). The melody begins with a mezzo-forte (*mf*) dynamic. The notation includes eighth and quarter notes, rests, and a final measure with a fermata.

The first staff of music is in bass clef with a key signature of one flat (B-flat). It begins with a quarter rest, followed by a quarter note G2 (marked *mf*), an eighth note F2, a quarter note E2, and a half note D2. This is followed by a quarter rest, a quarter note C2 (marked with an accent), a quarter rest, a quarter note B1 (marked with an accent), and a quarter note A1. The next measure contains a quarter note G1, an eighth note F1, and a quarter note E1. This is followed by a quarter rest, a quarter note D1, and a half note C1. The staff concludes with a quarter rest, a quarter note B1, and a half note A1 (marked *ff*), ending with a double bar line.

# Der Tanz des Wassermanns

Posaune 4

Johann Hausl



6



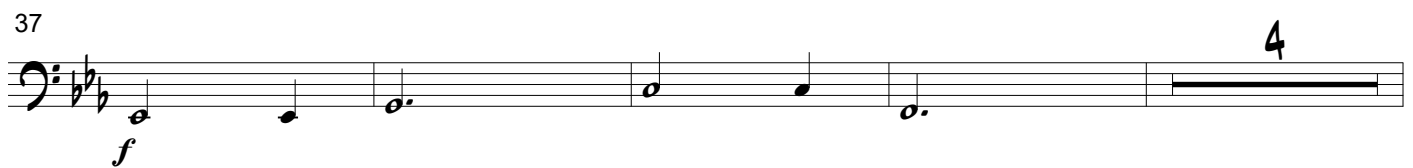
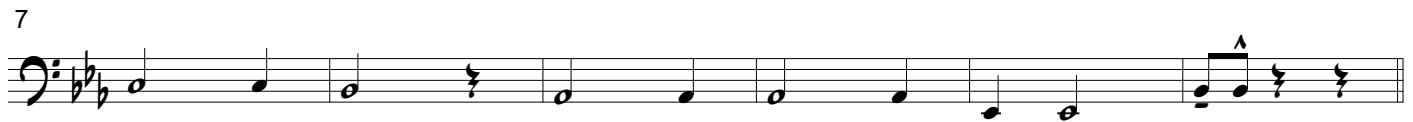
10



# Ein goldener Fuß

Posaune 4

Johann Hausl



49

*mf*

58

62

*f*

68

74

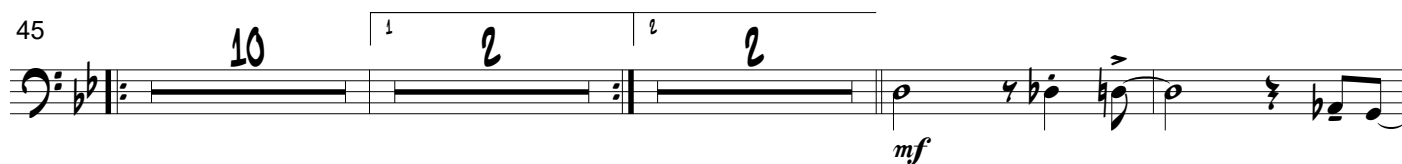
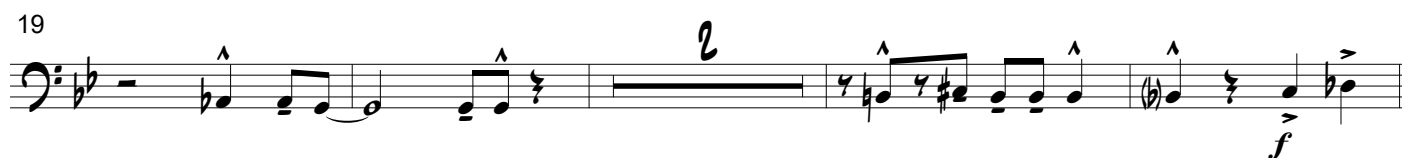
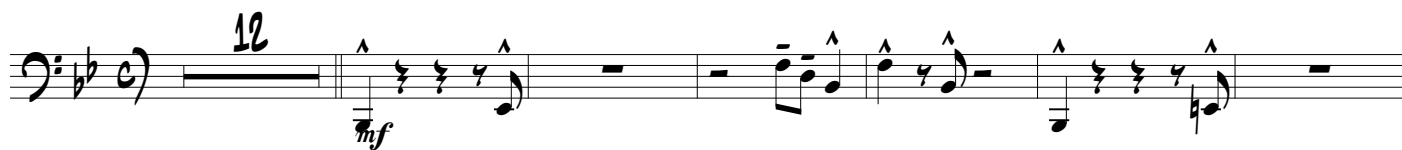
78

84

92

## Ein silbernes Herz

Musik: Johann Hausl





61



67



82



87



91



97



103



107



# Ein eiserner Hut

Posaune 4

Johann Hausl



7



13



19



25



29



33



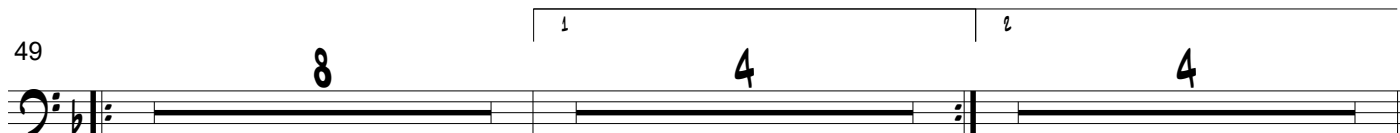
41



45



49



65



71



75



81



85



# Ein eiserner Hut - Reprise

## Posaune 4

Johann Hausl

7

Measure 7: The melody continues with a quarter note G4, a quarter note A4, and a quarter note B4. The bass line consists of a half note G3 and a half note F3. The measure ends with a double bar line.

13

[illegible][illegible]

31

38

ff

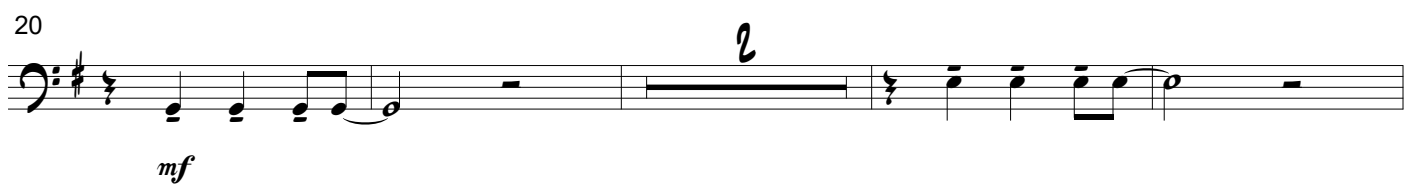
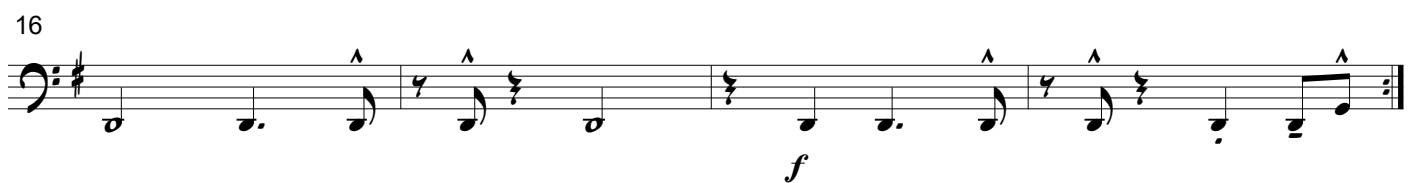
45

45

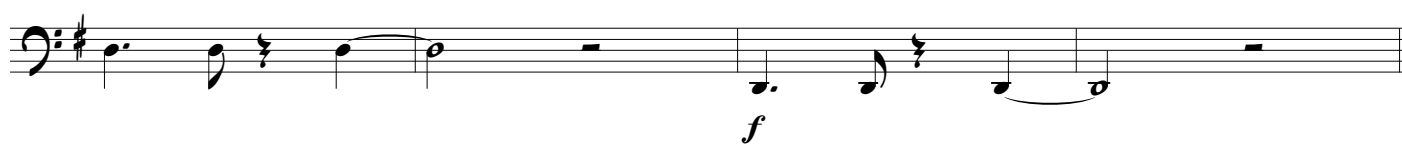
# Ein Karfunkelstein

Posaune 4

Johann Hausl



32



36



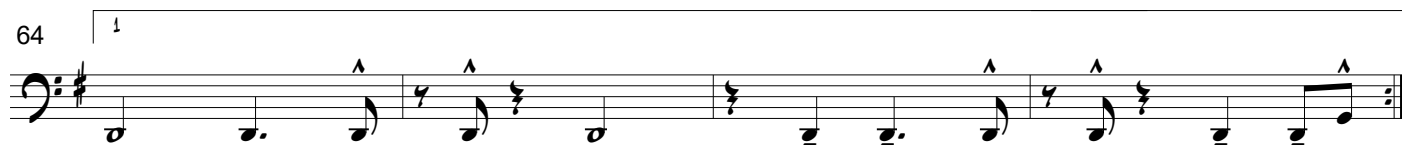
52



58



64



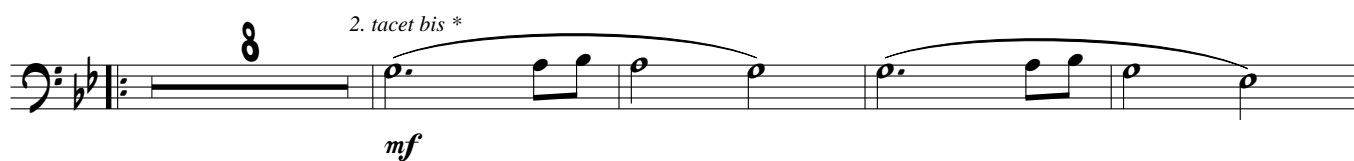
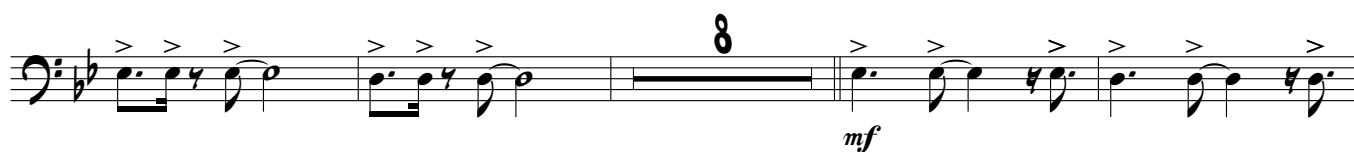
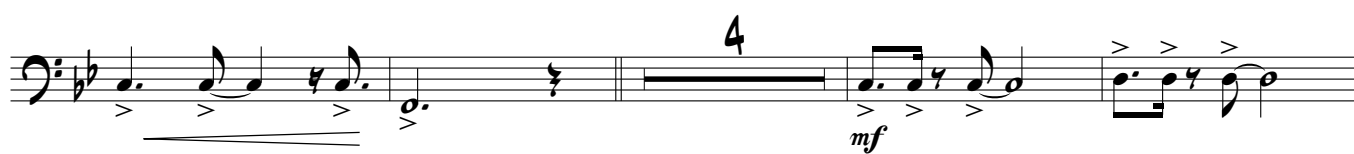
68



# Conclusion

Posaune 4

Johann Hausl





*molto rit.*